

SOUTHSIDE PARTNERSHIP DLR

Information and resources for New
Arrivals in the Dun Laoghaire /
Rathdown (DLR) area

WELCOME TO DLR

www.southsidepartnership.ie



Rialtas na hÉireann
Government of Ireland



Arna chomhchistiú ag
an Aontas Eorpach
Co-funded by the
European Union



Social Inclusion &
Community Activation
Programme



Comhairle Contae County Council



government supporting communities

This project is co-funded by the Government of Ireland and the European Union.

DUBLIN



Dublin; Irish: **Baile Átha Cliath**, is the capital and largest city of Ireland. Situated on a bay on the east coast, at the mouth of the River Liffey, it is in the province of Leinster and the Eastern and Midland Region. Dublin is famous for its cultural heritage and charming hospitality.



DÚN LAOGHAIRE-RATHDOWN

Dún Laoghaire–Rathdown (DLR) is an area in Dublin. It is part of the province of Leinster and the Eastern and Midland Region. The county has been home to many famous people over the years, including such writers as Joyce, Shaw and Beckett.



NEW ARRIVALS SUPPORT TEAM

Southside Partnership DLR is a community development organisations which aims to address social inclusion and build vibrant communities in DLR.



The **SSP New Arrivals Support Team** provides a range of **free one to one support and services** that include access to:

- 1:1 needs assessments
- Access to personal development courses & workshops
- Pre & post employment supports
- CV development and workshops
- Translation Services
- Access to school places & education information around adult education
- Personal services & support
- Form completion

NEW ARRIVALS SUPPORT TEAM
SOUTHSIDE PARTNERSHIP DLR

DROP-IN SESSIONS

HOW CAN WE HELP YOU?

One to one supports we provide include:

- Accessing services
- CV Development
- Individual Applications
- Translation services
- General Information & guidance
- Event guides and opportunities
- Further training and education
- And more.....

WHEN: EVERY WEDNESDAY
FROM: 10 - 4
LOCATION: 4a Glenville Terrace, Dundrum
Main Street, Dublin 14
EIRCODE: D14 X3V1

JUST EMAIL US TO MAKE AN APPOINTMENT:
RUSLANA.TYMOFEYEVA@SSPSHIP.IE
GILLIAN.DUFFY@SSPSHIP.IE



This project is co-funded by the Government of Ireland and the European Union.

www.southsidepartnership.ie email:
sspsintegrationteam@sspship.ie

DLR COUNTY COUNCIL

Dún Laoghaire-Rathdown County Council is the authority responsible for local government in the county of DLR, Ireland. Please use the accessibility button at the top of the web page to change to your language of choice. www.dlrcoco.ie

CITIZENS INFORMATION



The **citizensinformation.ie** website provides comprehensive information on public services and on the entitlements of citizens in Ireland. They gather information from various government departments and agencies, and make sure that you have all the information you need, presented in an easy-to-understand way. Citizens Information is available through the QR code below:



You can also call Citizens Information phone line:
0818 07 4000, Monday to Friday, 9am-8pm

LOCAL TRANSPORT



Dublin has a number of travel options available:
Train, Bus, Dart, Luas

For all your transport options, scan here:



USEFUL CONTACTS FOR NEW ARRIVALS



IOM

<https://iom.ie>



Jesuit Refugee Service

jrs.ie



AkiDwa

<https://akidwa.ie>



Irish Red Cross

<https://www.redcross.ie>



Irish Refugee Council

<https://www.redcross.ie>



DORAS

<https://doras.org>



DLR Local Authority Integration Team (LAIT)

integration@dlrcoco.ie

Immigrant Council of Ireland (01) 674 0200

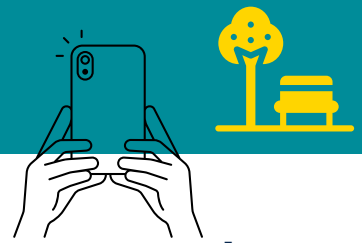
Crosscare Migrant Project (01) 873 2844

Migrant Rights Centre Ireland (01) 889 7570

Department of Social Protection office location:

<https://www.gov.ie/en/intreo-centres/>

THINGS TO DO NEAR YOU



Killiney Hill & Beach



Shankill castle & gardens



DRL Parks



Visit Dublin City



Museums in DLR



Walking / Cycling trails



Parkrun www.parkrun.ie/ A free, fun, and friendly weekly 5k community event. Every Saturday at 9:30am. Walk, jog, run, volunteer or spectate – it's up to you! it's free! but please register before you first come along. There a number of Parkruns near to your area including:



- Shanganagh Park
- Marley Park
- Blackrock Park



PLACES TO VISIT NEAR YOU



Dún Laoghaire Pier and Harbour



www.dlharbour.ie

dlr Lexicon Library



www.libraries.dlrco.co.ie

Hellfire club and Massey woods for walks



<https://libraries.dlrco.co.ie/ballyogan-library>

Ballyogan Library



<https://libraries.dlrco.co.ie/ballyogan-library>

Please also check Dublin Event guide free events updated weekly

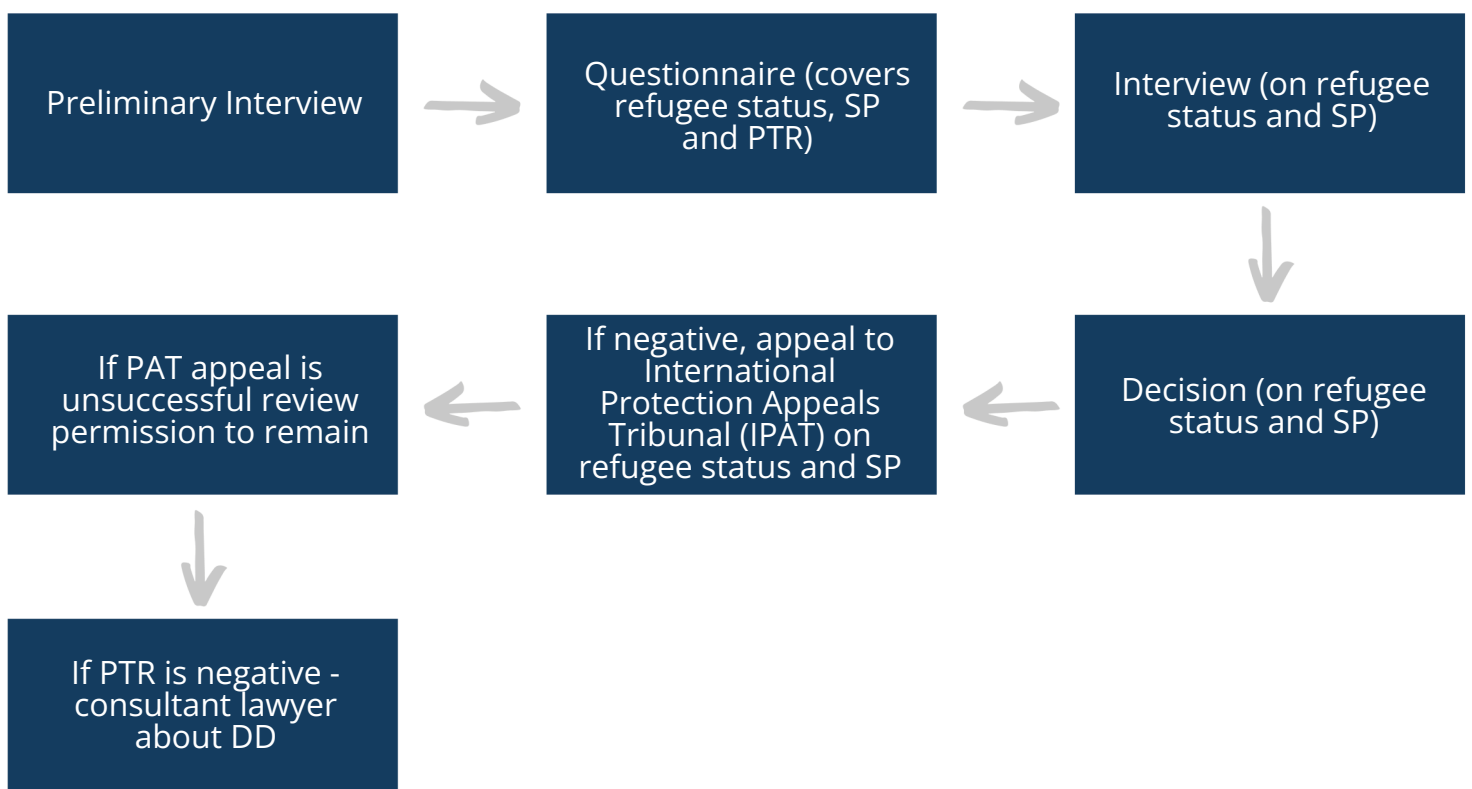
www.facebook.com/DublinEventGuide

HOW TO APPLY FOR INTERNATIONAL PROTECTION

When you apply for international protection in Ireland, the International Protection Office (IPO) will process your application. You can apply for asylum (International Protection) in Ireland regardless of your current status in the state. So, for example, if you are currently undocumented or residing in Ireland as a student, you can still apply.

When you make an application you are assessed for 3 things at once: refugee status, subsidiary protection, and permission to remain. To obtain international protection (either refugee status or subsidiary protection) you would need to demonstrate that it is unsafe for you to return to your country because of fear of persecution or serious harm.

The International Protection Process



Usually, there are six steps you need to take to apply. Step

1: Tell the authorities you want to apply. **Step 2:** Do a preliminary interview. **Step 3:** Complete a questionnaire. **Step 4:** Do a personal interview (also called second interview). **Step 5:** Get a recommendation from the IPO. **Step 6:** Get a decision from the Ministerial Decisions Unit.

While waiting on the International Protection Office (IPO) to access your claim, you are entitled to the following:

Somewhere to live:

Accommodation will be provided to you but you are not under any obligation to accept this offer. You can rent privately or stay with friends/family if you prefer. Please note: If you choose to live independently, you are not entitled to the weekly payment or any other social welfare supports. If you change your mind at a later date, you are entitled to opt into the direct provision system.

Your meals:

Your meals will be provided to you if you accept an offer of accommodation.

A weekly payment of €38.80 per adult and €29.80 per child

A medical card:

This provides you with access to free doctors' appointments, free hospital care & low-cost prescriptions.

All children and young people are entitled to free primary and post-primary education.



Accessing government supports

To securely access a growing range of public services online, including Revenue services, social welfare payments, student grant applications, driver license renewals, and the Digital Postbox. A verified MyGovID provides a single, secure digital identity for these services, making online interactions with government easier, more convenient, and more secure.

To sign up for a mygovid account, download mygovid app from the playstore or apple store



GET A BASIC ACCOUNT NOW

SEE HOW IT WORKS

What can I do with MyGovID?

MyGovID gives you safe, online access to Irish government services. [Create a basic account](#) for instant access to simple services or [verify your account](#) to unlock all [MyGovID services](#).

NDLS SUSI MyWelfare Revenue

LEGAL ASSISTANCE



You are entitled to free legal assistance throughout the international protection process.

You should call the Legal Aid Board in Smithfield Dublin, to request a lawyer on (01) 646 9600

WORKING IN IRELAND

You are not allowed to work until you have been waiting for 6 months for the IPO to issue its first decision (called the 'first instance recommendation') on your application. You can make an application for Labour Market Access Permission if: You have been waiting for at least 5 months for a decision on your application and you have co-operated in the application process. The current processing time for all LM applications is 4 weeks from the time your application is received.

If you get permission to work, it is valid from when you have been waiting for a decision on your IPO application for 6 months.

To apply for permission to work, you must apply online via the INIS website.

If you do not already have one, you will have to create an ISD account first.



If your application is successful, Immigration Services Delivery will send you a letter giving you permission to work.

When you find a job, your employer (or you if you are self-employed) should send Form LMA5 to the Immigration Services Division.

IMPORTANT NOTE:

You should apply to renew your permission to work online one month before it expires.

LOOKING FOR A JOB

Tips when applying for jobs:

- Set up alerts- you receive emails relevant jobs
- Search online and in person
- Use websites and choose a few recruitment companies (specific to your area)
- Have a plan
- Don't get worried when you do not get a response
- Keep track of all applications you make
- Set up your voicemail on your phone

Below is a list of useful websites to help you search for the right job for you:

- www.Linkedin.com
- <https://www.jobs.ie/Jobs.aspx>
- www.irishjobs.ie
- <https://ie.indeed.com/>
- Public jobs <https://www.publicjobs.ie/en/>
- Non-profit sector <https://www.activelink.ie/vacancies>

Recruitment companies:

- Recruitment companies charge the company (not the jobseeker) for their service
- There are often specific to sectors, like tech, legal, hospitality, manufacturing
- There are over 600 in Ireland
- They act as an independent broker between company and candidate (Jobseeker)

Further Education opportunities

Scan the QR codes below by opening the camera on your phone & click on the link that appears.



DDLETB Loughlinstown



DDLETB Dublin and Dún Laoghaire



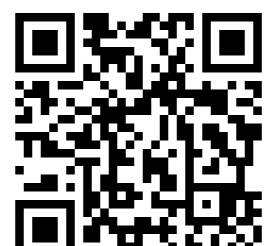
Springboard.ie



Fetch.ie



Nala.ie



coursera.org



eCollge.ie



For more training & course options - scan the QR code below



NOTE: Some of these opportunities may not be available to you until you are your permission to work.

Family supports and Childcare

There are a number a childcare options available to you. Childcare options in Ireland include Crèches, Montessori Schools, as well as various schemes such as the ECCE Programme for free preschool hours and the National Childcare Scheme (NCS) for financial subsidies. Families can apply for NCS funding online to help cover costs outside of the free ECCE hours or for other childcare needs. The ECCE Programme provides two years of free, part-time (3 hours a day, 5 days a week) pre-school education for children aged 2 years and 8 months by the August before they start.



For all options available to you, please go to: <https://dlrccc.ie/>

Parenting in Ireland

A guide for newly arrived parents in Ireland

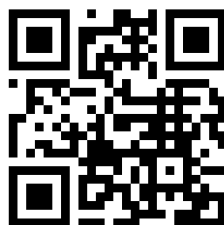


For other services & more information, scan the QR code: below

Lets Parent DLR



Nation Childcare Scheme



Crosscare



SAFETY



An Garda Síochána

Ireland's National Police and Security Service

Ireland is generally a **safe** place to visit and live. The 2020 Global Peace Index ranks it as the 12th safest country in the world.

Dublin is a great area. You are a little outside Dublin city but you can reach it by train or bus.

To locate your nearest Garda Station:

<https://www.garda.ie/en/contact-us/station-directory/>

Or scan here:



IN AN EMERGENCY ALWAYS DIAL:

999 OR 112



Children, Young People and Families

Older People & People with Disabilities

PEEP+ DLR (087) 1129542
 Parent & Babies **Ask for Tracey**

Holly House Community Resource Centre (01) 2722613
 Children, Young People and Families **Ask for Natalie**

Furry Hill Community Centre (087) 2974205
 Children **Ask for Zeynep**

Care & Repair (01) 4455450
 Support for Older People **Ask for Care & Repair**

Ballybrack Project Centre (01) 2350778
 Community Education **Ask for Gina**
 Support to Local Community Groups



Health and Wellbeing Programmes

Healthy Food Made Easy Programme (087) 1090106 **SAVE (Southside Addressing Violence Effectively)** (087) 3935955
Ask for Angie **Ask for Miriam**

Community Connector Programme (087) 7370372 **LWwD (Living Well with Dementia)** (086) 0418450
Ask for Lisa **Ask for Mary**

DLR Social Prescribing for Health & Wellbeing Programme (087) 7370372 **SWAP (Senior Wellness Activity Programme)** (087) 3591484
Ask for Lisa **Ask for Ben**

Integration Team



SSP Women's Programme

New Arrivals Support Team (01) 7060100 **Ask for Karla**

Furry Hill Community Centre (087) 7203665 **Ask for Rafika**

Community Link Worker (087) 2139725 **Ask for Yelena**



Enterprise & Employment

Enterprise Supports (087) 2377361 **Ask for Esther**

Employment, Training and Further Education (087) 3806839 **Ask for Yvette**

Social Enterprise Supports (087) 6728670 **Ask for Helena**

LAES - Local Area Employment Service (087) 1990817 **Ask for Paul**

PICES - Community Employment Scheme (087) 3689573 **Ask for Tim**

Tús - Community Work Placement (01) 7060100 **Ask for Ciara**



